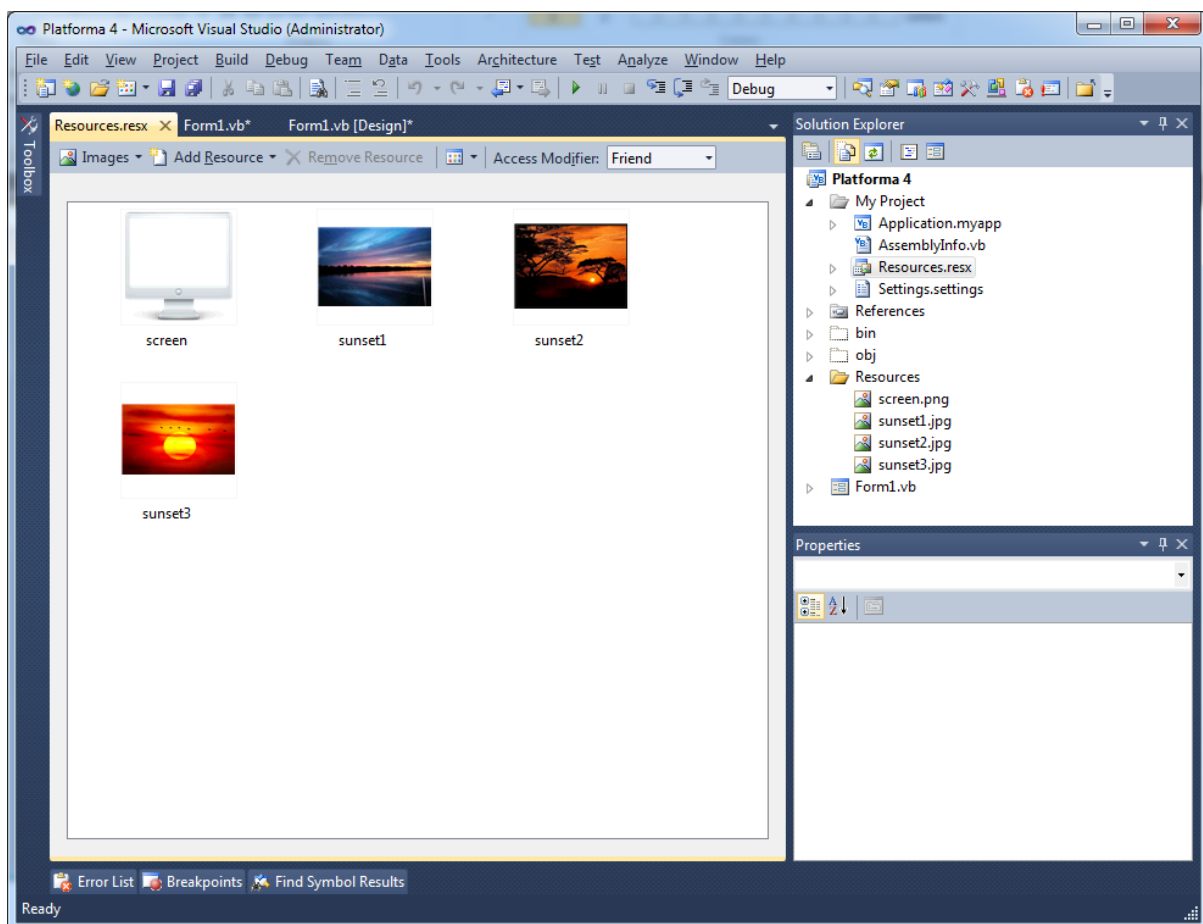
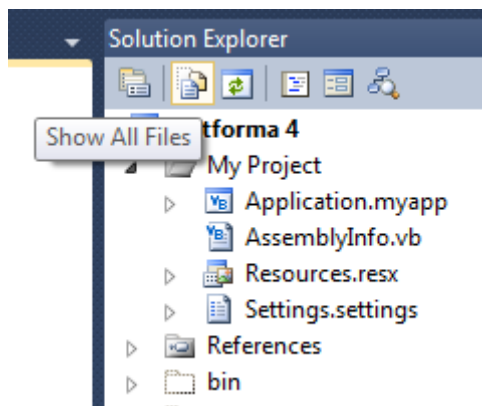


## My.Resources

Zona My.Resources se refera la diverse resurse disponibile pentru intregul program. Acestea pot fi imagini, text, fisiere, icon-uri, sunete etc.

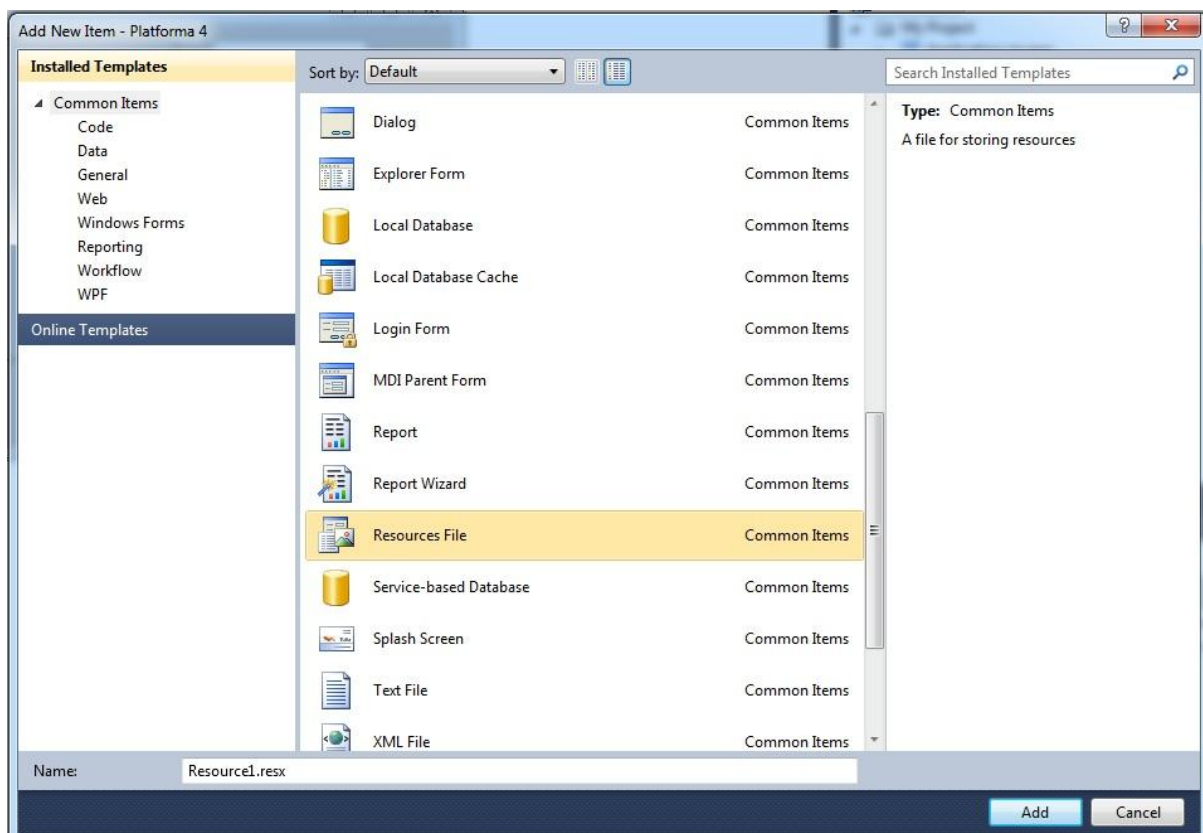
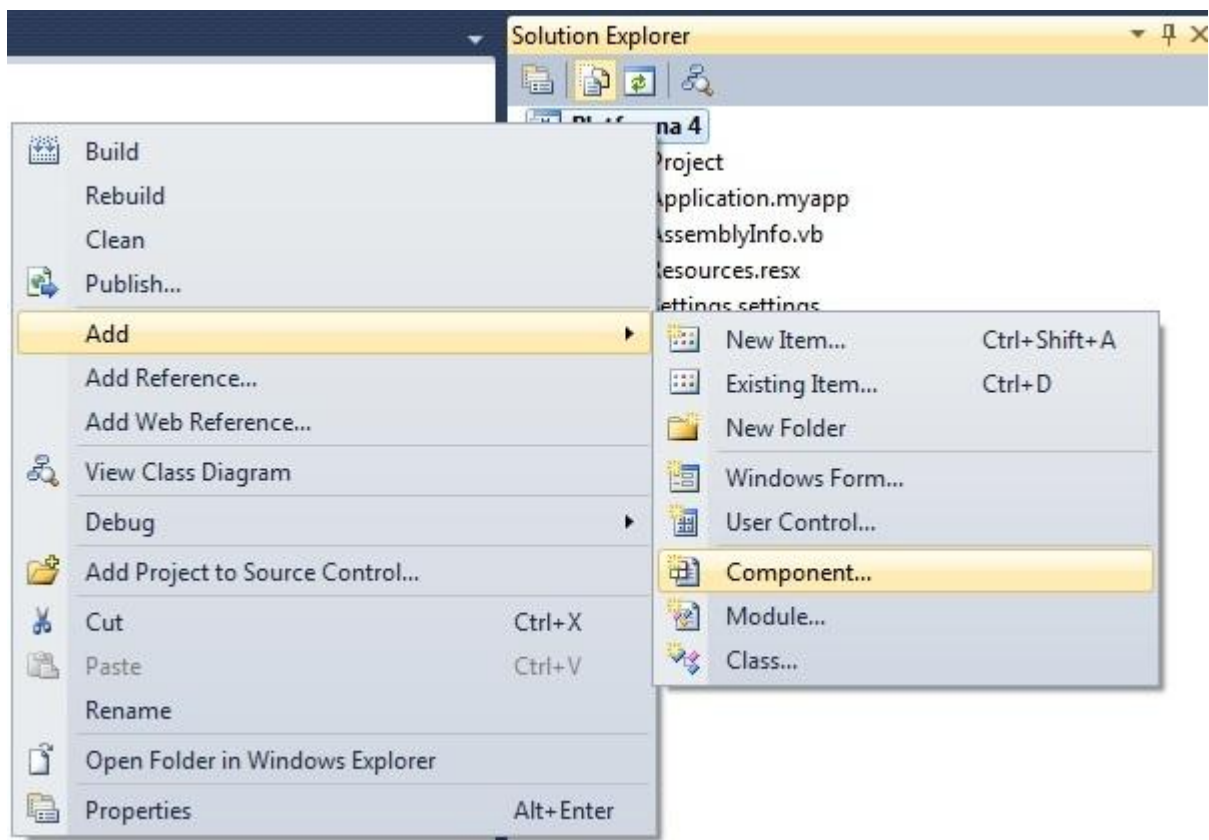


Creati un nou program si apoi creati fisierul resources.resx .

Pentru a crea Resources.resx :

- In solution explorer, click dreapta pe noua platforma creata si selectati Add Component
- In fereastra deschisa selectati Resource File

*Timp de lucru: ~1h.*



Importati in fisierul Resources.resx cele 4 imagini din platforma, din directorul Resources. Pentru acest lucru efectuati un dublu click pe fisierul Resources.resx si in fereastra deschisa trageți cele 4 imagini.

*Timp de lucru: ~1h.*

**Sarcina 1:** introduceti 3 butoane pe fereastra, **cmdSunset1** **cmdSunset2** si **cmdSunset3**, care sa puna imaginile **sunset1.png**, **sunset2.png** si **sunset3.png** in ecranul din **PictureBox1**. De asemenea adaugati si un text box ce va afisa temperature scrisa in acesta.

Codul necesar pentru aceste 4 obiecte este :

```
Imports System.Drawing
Imports System.Drawing.Drawing2D

Public Class Form1

    Private Sub cmdSunset1_Click(ByVal sender As System.Object, ByVal e As System.EventArgs) Handles cmdSunset1.Click
        Dim b As New Bitmap(256, 256)
        Dim g As Graphics = Graphics.FromImage(b)

        g.DrawImage(My.Resources.sunset1, 20, 20, 220, 150)
        g.DrawImage(My.Resources.screen, 0, 0, 256, 256)

        g.DrawString(txtTemp.Text & ChrW(176) & "C", New Font("Arial", 18, FontStyle.Bold, GraphicsUnit.Point), Brushes.AliceBlue, 165, 140)

        g.Dispose()

        PictureBox1.Image = b
    End Sub

    Private Sub cmdSunset2_Click(ByVal sender As System.Object, ByVal e As System.EventArgs) Handles cmdSunset2.Click
        Dim b As New Bitmap(256, 256)
        Dim g As Graphics = Graphics.FromImage(b)

        g.DrawImage(My.Resources.sunset2, 20, 20, 220, 150)
        g.DrawImage(My.Resources.screen, 0, 0, 256, 256)

        g.DrawString(txtTemp.Text & ChrW(176) & "C", New Font("Arial", 18, FontStyle.Bold, GraphicsUnit.Point), Brushes.AliceBlue, 165, 140)

        g.Dispose()

        PictureBox1.Image = b
    End Sub

    Private Sub cmdSunset3_Click(ByVal sender As System.Object, ByVal e As System.EventArgs) Handles cmdSunset3.Click
        Dim b As New Bitmap(256, 256)
        Dim g As Graphics = Graphics.FromImage(b)

        g.DrawImage(My.Resources.sunset3, 20, 20, 220, 150)
        g.DrawImage(My.Resources.screen, 0, 0, 256, 256)

        g.DrawString(txtTemp.Text & ChrW(176) & "C", New Font("Arial", 18, FontStyle.Bold, GraphicsUnit.Point), Brushes.AliceBlue, 165, 140)

        g.Dispose()

        PictureBox1.Image = b
    End Sub

    Private Sub Form1_Load(ByVal sender As System.Object, ByVal e As System.EventArgs) Handles MyBase.Load

    End Sub
End Class
```

**Sarcina 2:** Folosing componenta **Timer**, scrieti o functie care sa completeze un cerc, procentual, +1%/secunda, ca intr-un grafic din Excel. (Pie chart, 2D). (Obs. Graphics.FillPie() )

*Timp de lucru: ~1h.*

Codul necesar este :

```

Private Sub Button3_Click(ByVal sender As System.Object, ByVal e As System.EventArgs) Handles Button3.Click

    ColorDialog1.Color = colorLeft
    ColorDialog1.ShowDialog()
    colorLeft = ColorDialog1.Color
    ColorDialog1.Color = colorRight
    ColorDialog1.ShowDialog()
    colorRight = ColorDialog1.Color
    |
    Timer1.Enabled = True
    currentAngle = 0
End Sub

Dim currentAngle As Integer = 0

Dim colorLeft As Color = Color.Green
Dim colorRight As Color = Color.Red

Private Sub Timer1_Tick(ByVal sender As System.Object, ByVal e As System.EventArgs) Handles Timer1.Tick
    If currentAngle < -360 Then
        Timer1.Enabled = False
        Exit Sub
    End If
    Dim b As New Bitmap(256, 256)
    Dim g As Graphics = Graphics.FromImage(b)
    g.SmoothingMode = Drawing2D.SmoothingMode.AntiAlias

    Dim br As New LinearGradientBrush(New Rectangle(0, 0, 256, 256), colorLeft, colorRight, CSng(currentAngle / 2))

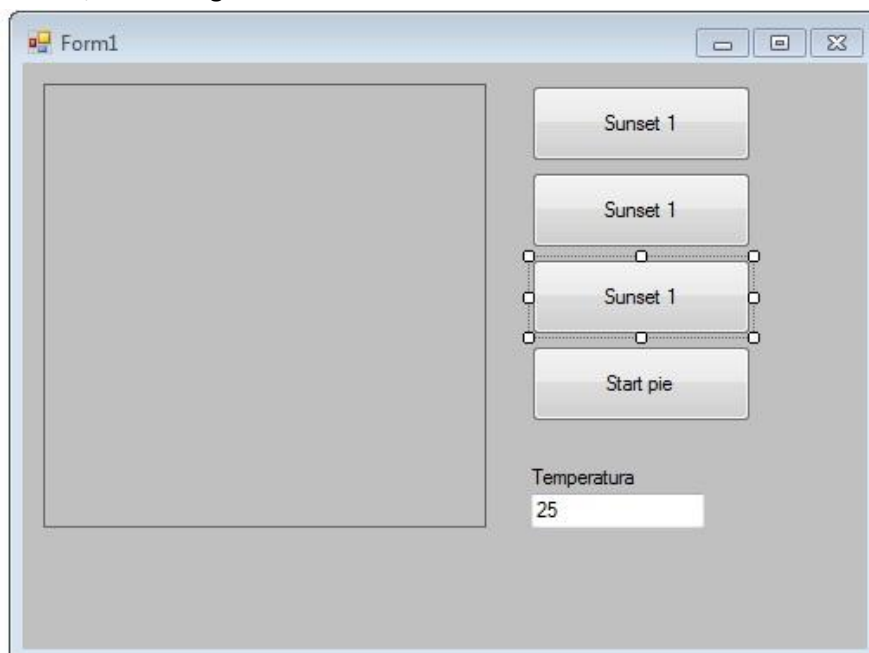
    g.FillPie(New SolidBrush(colorLeft), New Rectangle(0, 0, 256, 256), -90, currentAngle)
    currentAngle -= 1
    g.FillPie(New SolidBrush(colorRight), New Rectangle(0, 0, 256, 256), -90, currentAngle * (-1))
    'g.FillPie(br, New Rectangle(0, 0, 256, 256), -90, currentAngle * (-1))
    My.Computer.Audio.PlaySystemSound(Media.SystemSounds.Question)

    g.Dispose()

    PictureBox1.Image = b
End Sub

```

La final, interfata grafica va trebui sa arata in felul urmator :



Timp de lucru: ~1h.

Codul va arata in felul urmatoar :

```
Imports System.Drawing
Imports System.Drawing.Drawing2D

Public Class Form1

    Private Sub cmdSunset1_Click(ByVal sender As System.Object, ByVal e As System.EventArgs) Handles cmdSunset1.Click
        Dim b As New Bitmap(256, 256)
        Dim g As Graphics = Graphics.FromImage(b)

        g.DrawImage(My.Resources.sunset1, 20, 20, 220, 150)
        g.DrawImage(My.Resources.screen, 0, 0, 256, 256)

        g.DrawString(txtTemp.Text & ChrW(176) & "C", New Font("Arial", 18, FontStyle.Bold, GraphicsUnit.Point), Brushes.AliceBlue, 165, 140)

        g.Dispose()

        PictureBox1.Image = b
    End Sub

    Private Sub cmdSunset2_Click(ByVal sender As System.Object, ByVal e As System.EventArgs) Handles cmdSunset2.Click
        Dim b As New Bitmap(256, 256)
        Dim g As Graphics = Graphics.FromImage(b)

        g.DrawImage(My.Resources.sunset2, 20, 20, 220, 150)
        g.DrawImage(My.Resources.screen, 0, 0, 256, 256)

        g.DrawString(txtTemp.Text & ChrW(176) & "C", New Font("Arial", 18, FontStyle.Bold, GraphicsUnit.Point), Brushes.AliceBlue, 165, 140)

        g.Dispose()

        PictureBox1.Image = b
    End Sub

    Private Sub _Click(ByVal sender As System.Object, ByVal e As System.EventArgs) Handles cmdSunset3.Click
        Dim b As New Bitmap(256, 256)
        Dim g As Graphics = Graphics.FromImage(b)

        g.DrawImage(My.Resources.sunset3, 20, 20, 220, 150)
        g.DrawImage(My.Resources.screen, 0, 0, 256, 256)

        g.DrawString(txtTemp.Text & ChrW(176) & "C", New Font("Arial", 18, FontStyle.Bold, GraphicsUnit.Point), Brushes.AliceBlue, 165, 140)

        g.Dispose()

        PictureBox1.Image = b
    End Sub

    Private Sub Button3_Click(ByVal sender As System.Object, ByVal e As System.EventArgs) Handles Button3.Click

        ColorDialog1.Color = colorLeft
        ColorDialog1.ShowDialog()
        colorLeft = ColorDialog1.Color
    End Sub
End Class
```

Timp de lucru: ~1h.

```
ColorDialog1.Color = colorRight
ColorDialog1.ShowDialog()
colorRight = ColorDialog1.Color

Timer1.Enabled = True
currentAngle = 0
End Sub

Dim currentAngle As Integer = 0

Dim colorLeft As Color = Color.Green
Dim colorRight As Color = Color.Red

Private Sub Timer1_Tick(ByVal sender As System.Object, ByVal e As System.EventArgs) Handles Timer1.Tick
    If currentAngle < -360 Then
        Timer1.Enabled = False
        Exit Sub
    End If
    Dim b As New Bitmap(256, 256)
    Dim g As Graphics = Graphics.FromImage(b)
    g.SmoothingMode = Drawing2D.SmoothingMode.AntiAlias

    Dim br As New LinearGradientBrush(New Rectangle(0, 0, 256, 256), colorLeft, colorRight, CSng(currentAngle / 2))

    g.FillPie(New SolidBrush(colorLeft), New Rectangle(0, 0, 256, 256), -90, currentAngle)
    currentAngle -= 1
    g.FillPie(New SolidBrush(colorRight), New Rectangle(0, 0, 256, 256), -90, currentAngle * (-1))
    'g.FillPie(br, New Rectangle(0, 0, 256, 256), -90, currentAngle * (-1))
    My.Computer.Audio.PlaySystemSound(Media.SystemSounds.Question)

    g.Dispose()

    PictureBox1.Image = b
End Sub

Private Sub Form1_Load(ByVal sender As System.Object, ByVal e As System.EventArgs) Handles MyBase.Load

End Sub
End Class
```